

## New Jersey Fire Inspector Certification Program

**New  
Jersey  
Uniform  
Fire Code**

**Fire  
Inspector  
Training  
Program**

Based on the ICC IFC-  
2015 Edition with NJ  
adopted changes



---

---

---

---

---

---

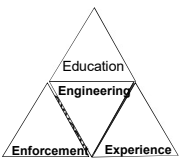
---

---

## Fire Inspector Certification Program

### New Jersey Uniform Fire Code Inspector Training Program

Module 2 Theory of Fire Code Enforcement



---

---

---

---

---

---

---

---

## Welcome

Instructor introduction

- Before we get started
  - Has everyone signed in?
  - Anyone have any questions?

---

---

---

---

---

---

---

---

## Theory of Fire Code Enforcement

In this module we will discuss...

- How buildings are classified under the UCC-NJ,
- Use Group classifications.
- How UFC interfaces with UCC
- How the different codes are applied,

---

---

---

---

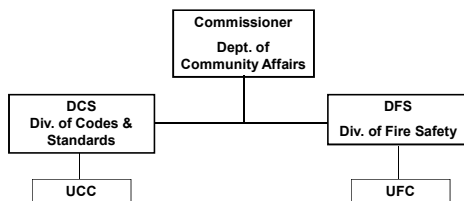
---

---

---

## Building Codes & Fire Codes

- In NJ there are **two** different and distinct codes enforcement groups.




---

---

---

---

---

---

---

## Building Classifications

- Prior to being constructed building go through a process termed- PLAN REVIEW.
- The builder will work with an architect and develop plans which are submitted.
- These plans are reviewed by the Planning Office, Zoning etc.
- Once approval is granted the plans go to Construction under UCC




---

---

---

---

---

---

---

## Building Classifications

- The Construction office is responsible to review for code compliance.
- One of the very first items this office will do is to classify the buildings use group
- Each building use has very specific use parameters for construction and life safety requirements.
- This classification is carried through the life of the building until it is either destroyed or a change of use occurs through UCC.




---

---

---

---

---

---

---

## Code Application

- As a fire inspector enforcing the UFC-NJ, One of our tasks is to maintain buildings and structures as they were approved and built under the UCC-NJ.
- To do this task we need to know how the building or structure was approved and what systems were required.
- An understanding of building classification is an essential element in the fire code enforcement process.

---

---

---

---

---

---

---

## Code Application

- The NJ edition of the IFC adopted for the UFC is not to be used as the reference code for the application of UCC/IBC code requirements.
- The regular Non-NJ (2015) edition of the IBC is the correct code to reference for the UCC/IBC.
- These are actually two completely different codes.




---

---

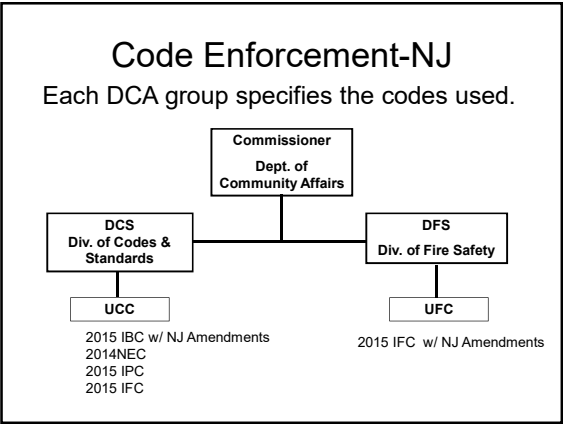
---

---

---

---

---



---

---

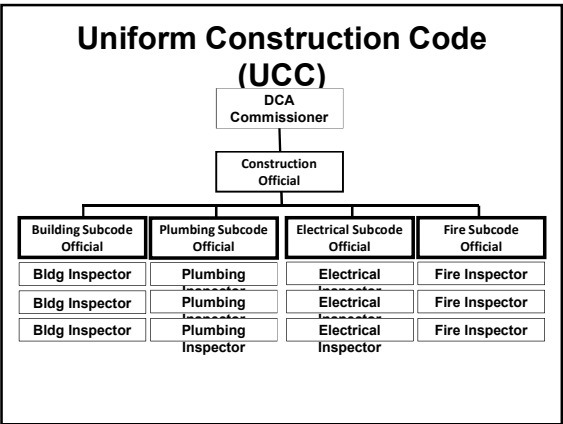
---

---

---

---

---



---

---

---

---

---

---

---

**USE GROUP**

“Use” or “Use Group” means the use to which a building, portion of a building, or premises, is put as follows. It shall also mean and include any place, whether constructed, manufactured or naturally occurring, whether fixed or mobile, that is used for human purpose or occupancy that would subject it to the provisions of this Code if it were a building or premises.

UCC Definition

---

---

---

---

---

---

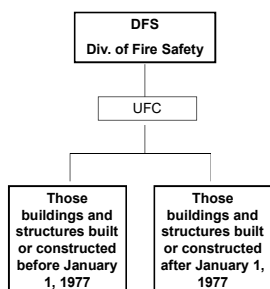
---

## Use Groups

- Use Group classification requirements and definitions are found in Chapter 3 of the IBC-NJ 2015.
- Use Groups designations assigned pursuant to the UCC remain with the building or structure until changed by UCC or the building is destroyed
- There is another list of Use Group designations found in the UFC that are utilized when we assess a structure for application of our Subchapter 4 retrofit requirements. These definitions do not match and do not change.

## Code Enforcement-NJ

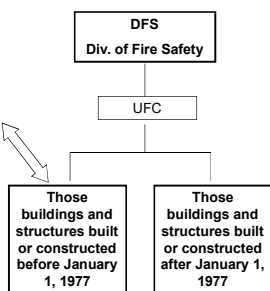
- The UFC-NJ employs two methods in the enforcement of the fire prevention code.



## Code Enforcement-NJ

- Those Constructed prior to the UCC-NJ adoption.
- Maintained as building and approved using the fire prevention code and Retro-code. (N.J.A.C. 5:70-4.1)

- Those Constructed under the UCC-NJ
- Maintained as building and approved using the fire prevention code.



### Class assignment

- List 10 Buildings and or structures and/or properties in your fire district or around your home or work.
  - **List the name business/facility**
  - **What they do** (Auto repair body shop, retail sales, business office)
- (see previous homework assignment from student manual)

Lets review that homework now.....

---

---

---

---

---

---

---

---

### Use Groups

---

---

---

---

---

---

---

---

### BUILDING CLASSIFICATION

- **A Assembly** A-1, A-2, A-3, A-4, A-5
- **B Business**
- **E Educational**
- **F Factory** F-1, F-2
- **H High Hazard** H-1, H-2, H-3, H-4, H-5
- **I Institutional** I-1, I-2, I-3
- **M Mercantile**
- **R Residential** R-1, R-2, R-3, R-4, R-5
- **S Storage** S-1, S-2
- **U Utility**

(Uniform Construction Code of N.J.)

---

---

---

---

---

---

---

---

ASSEMBLY

A  
1  
A  
2  
A  
3  
A  
4  
A  
5

- **A-1**  
"Use Group A-1": This Use Group shall include all theaters and other buildings used primarily for theatrical or operatic performances and exhibitions, arranged with a raised stage, proscenium curtain, fixed or portable scenery loft, lights, motion picture booth, mechanical appliances or other theatrical accessories and equipment, and provided with fixed seats.

---

---

---

---

---

---

---

Use Group A-1

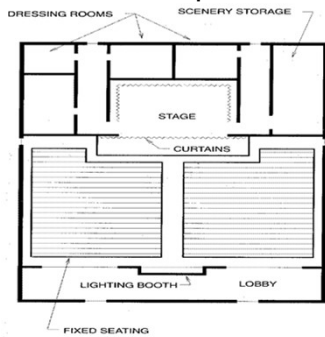


Figure 303.2(1)  
USE GROUP A-1

---

---

---

---

---

---

---

Use Group A-1 - Theater

A  
1  
A  
2  
A  
3  
A  
4  
A  
5



---

---

---

---

---

---

---

A  
1  
A  
2  
A  
3  
A  
4  
A  
5

### Use Group A-2 - Nightclub



---

---

---

---

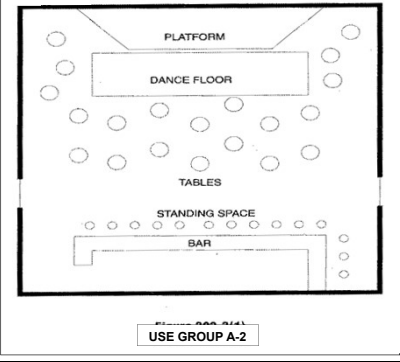
---

---

---

A  
1  
A  
2  
A  
3  
A  
4  
A  
5

### Use Group A-2



---

---

---

---

---

---

---

### ASSEMBLY

**A-2**  
"Use Group A-2": This Use Group shall include all buildings and places of public assembly, without theatrical stage accessories, designed for use as dance halls, night clubs, and eating and/or drinking establishments, and similar occupancies, in which the established maximum permitted occupant load exceeds the number of seats provided by more than 30 percent, and shall include all rooms, lobbies and other spaces connected thereto with a common means of egress and entrance.

---

---

---

---

---

---

---



Use Group A-2 - Restaurant



---

---

---

---

---

---

---

ASSEMBLY

A-3

A "Use Group A—3": This Use Group shall include all buildings with or  
1 without an auditorium in which persons assemble for amusement,  
2 entertainment or recreation, and incidental motion picture, dramatic or  
3 theatrical presentations, lectures or other similar purposes without  
4 theatrical stage other than a raised platform; and principally used  
5 without permanent seating facilities., and.

- art galleries,
- exhibition halls
- Museums
- lecture halls
- Libraries
- restaurants other than night clubs
- recreation centers
- buildings designed for other similar assembly purposes
- including passenger terminals

---

---

---

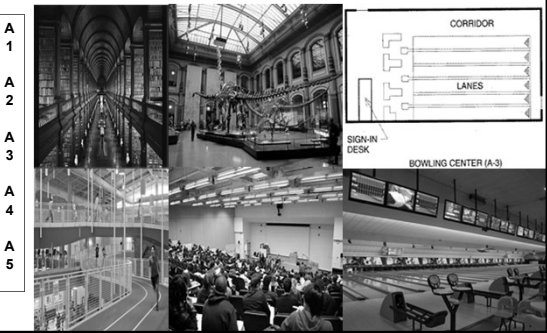
---

---

---

---

Use Group A-3



---

---

---

---

---

---

---

## ASSEMBLY

A  
1  
A  
2  
A  
3  
A  
4  
A  
5

### A-4

“Use Group A—4”: This Use Group shall include all buildings used as churches and for similar religious purposes.

---

---

---

---

---

---

---

## Use Group A-4

A  
1  
A  
2  
A  
3  
A  
4  
A  
5

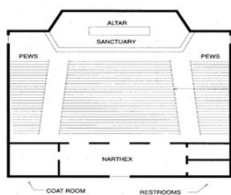


Figure 302.5  
USE GROUP A-4

USE GROUP A-4

---

---

---

---

---

---

---

## ASSEMBLY

A  
1  
A  
2  
A  
3  
A  
4  
A  
5

### A-5

“Use Group A—5”: This Use Group shall include amusement parks, grandstands, bleachers, coliseums, stadiums, tents and similar structures for outdoor assembly uses.

---

---

---

---

---

---

---

Use Group A-5 - Stadium



---

---

---

---

---

---

---

BUSINESS

- “Use Group B”: All buildings and structures, or parts thereof, shall be classified in Use Group B which are used for the transaction of business, for the rendering of professional services, or for other services that involve stocks of goods, wares or merchandise in limited quantities for use incidental to office uses or sample purposes.

---

---

---

---

---

---

---

Use Group B - Office



---

---

---

---

---

---

---

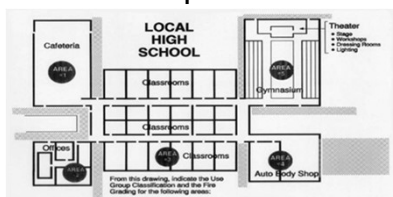
## Use Group B



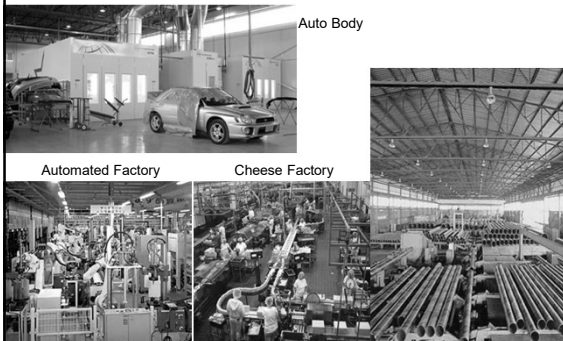
## EDUCATION

- **"Use Group E":** This Use Group shall include all buildings and structures serving 50 or more students from kindergarten through grade 12 and also means and includes any educational building serving 6 or more students in some, but not all, of the grades from kindergarten to grade 12, inclusive. NOTE: See exceptions in UBC-NJ

## Use Group E - School



## Use Group F




---

---

---

---

---

---

---

---

## Use Group F subgroups

- i. "Use Group F—1": Factory and industrial uses which are not otherwise classified as low-hazard Use Group F—2, shall be classified as a moderate-hazard factory and industrial use, Use Group F—i.
- ii. "Use Group F—2": Factory and industrial uses which involve the fabrication or manufacturing of non-combustible materials that, during finishing, packing or processing, do not contribute to a significant fire hazard, shall be classified as Use Group F—2. The following manufacturing processes are indicative of, and shall be classified as, Use Group F—2: beverages, nonalcoholic; brick and masonry; ceramic products; foundries; glass products; gypsum; ice; metal fabrication and assembly; and water pumping plants.

---

---

---

---

---

---

---

---

## FACTORY

### •F-1

"Use Group F": All buildings and structures, or parts thereof, in which occupants are engaged in performing work or labor in the fabricating, assembling or processing of products or materials shall be classified in Use Group F; including, among others, factories, assembling plants, industrial laboratories and all other industrial and manufacturing uses, except those of Use Group H involving highly combustible, flammable or explosive products and materials.




---

---

---

---

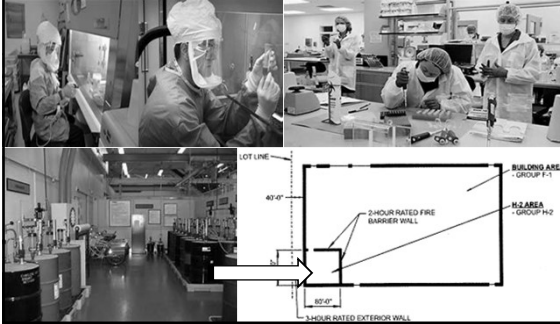
---

---

---

---

## Use Group F-1/H-2




---

---

---

---

---

---

---

---

## HIGH HAZARD

- “Use Group H”: All buildings and structures, or parts thereof, shall be classified in Use Group H which are used for the manufacturing, processing, generation or storage of corrosive, highly toxic, highly combustible, flammable or explosive materials that constitute a high fire or explosion hazard, including loose combustible fibers, dust and unstable materials.

---

---

---

---

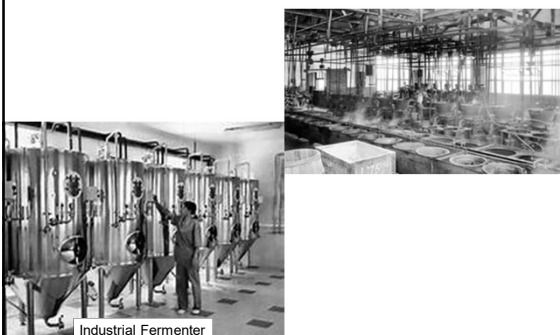
---

---

---

---

## Use Group H




---

---

---

---

---

---

---

---

## Institutional

- I-1 Institutional
- I-2 Institutional
- I-3 Institutional

---

---

---

---

---

---

---

## INSTITUTIONAL

“Use Group I—1”: This Use Group shall include buildings housing six or more individuals who, because of age, mental instability or other reasons, must live in a supervised environment but who are physically capable of responding to an emergency situation without personal assistance.

Included in this group are uses such as facilities for children, aged persons, mentally impaired and convalescents including: convalescent facilities, group homes, boarding houses, homes for the aged, mentally retarded care facilities, nursing homes (ambulatory), orphanages and residential care facilities.

Occupancies such as the above with five or less occupants shall be classified as a residential Use Group.

---

---

---

---

---

---

---

## Use Group I




---

---

---

---

---

---

---

### I-3 Use

“Use Group I—3”: This Use Group shall include all buildings designed for the detention of people under restraint, including, among others, jails, prisons, reformatories, insane asylums and similar uses.




---

---

---

---

---

---

---

---

### Institutional




---

---

---

---

---

---

---

---

### INSTITUTIONAL

- “Use Group I—2”: This Use Group shall include all buildings used for housing people suffering from physical limitations because of health or age, including, among others, day nurseries, hospitals, sanitariums, infirmaries, orphanages and homes for aged and infirm.

---

---

---

---

---

---

---

---



MERCANTILE

- “Use group M” All buildings and structures, or parts thereof, shall be classified in Use Group M which are used for display and sales purposes involving stocks of goods, wares or merchandise incidental to such purposes and accessible to the public; including, among others, retail stores, motor fuel service stations, shops and sales-rooms and markets.

---

---

---

---

---

---

---

Use Group M - Store



---

---

---

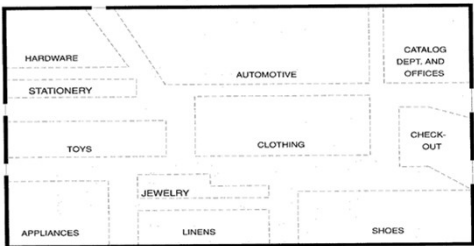
---

---

---

---

Use Group M



USE GROUP M Department Store

---

---

---

---

---

---

---

## RESIDENTIAL

- “Use Group R—1”: This Use Group shall include all hotels, motels, and similar buildings arranged for shelter and sleeping accommodations and in which the occupants are primarily transient in nature, making use of the facilities for a period of less than 30 days. This definition shall also mean and include bed and breakfast guesthouses and bed and breakfast inns.




---

---

---

---

---

---

---

---

## RESIDENTIAL

- “Use Group R—2”: This Use Group shall include all multiple family dwellings having more than two dwelling units and shall also include all dormitories, rooming houses, group rentals where the occupants are living independently of each other and similar buildings arranged for shelter and sleeping accommodations in which the occupants are primarily not transient in nature.
- This Use Group shall also include attached one- and two-family dwelling units which do not meet the definition for Use Group R—3.




---

---

---

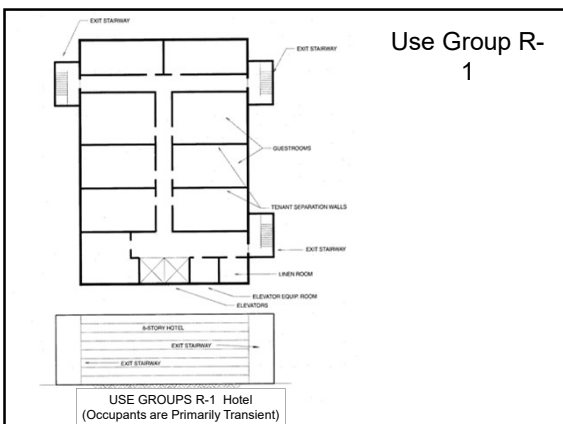
---

---

---

---

---




---

---

---

---

---

---

---

---

## RESIDENTIAL

- “Use Group R—3”: This Use Group shall include
  - all buildings arranged for the use of detached one- and two-family dwelling units, including not more than five lodgers or boarders per family. This Use Group shall also mean and include:
- i. Bed and breakfast homestays; and
- ii. Attached one- and two-family dwellings constructed in accordance with the Uniform Construction Code requirements for multiple single-family dwellings.

---

---

---

---

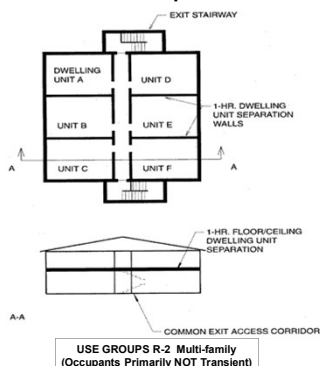
---

---

---

---

## Use Group R-2




---

---

---

---

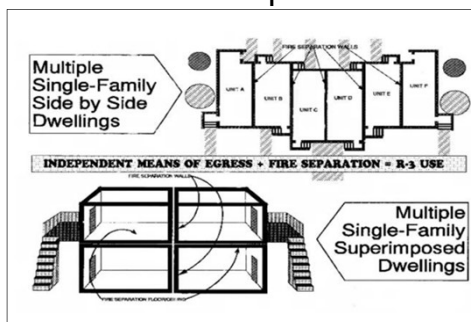
---

---

---

---

## Use Group R-3




---

---

---

---

---

---

---

---

Use Group R-3 – Multiple Single Family




---

---

---

---

---

---

---

RESIDENTIAL

- Use Group R-4 ICC (CABO)
- This group shall include all detached one or two family dwellings not more than three stories in height and accessory structures as indicated with ICC (CABO) Council of American Building Officials

---

---

---

---

---

---

---

RESIDENTIAL

- Use Group R-5
- This group shall include all detached one or two family dwellings not more than three stories in height and multiple single family townhouses not more than 3 stories in height designed and constructed in accordance with 1 & 2 family dwelling subcode

---

---

---

---

---

---

---

## STORAGE

- “Use Group S—1”: All buildings and structures, or parts thereof, which are used primarily for the storage of moderate hazard contents which are likely to burn with moderate rapidity, but which do not produce either poisonous gases, fumes or explosives; including, among others, warehouses, storehouses and freight depots.

---

---

---

---

---

---

---

## Use Group S-1 - Warehouse



---

---

---

---

---

---

---

## Use Group S-1

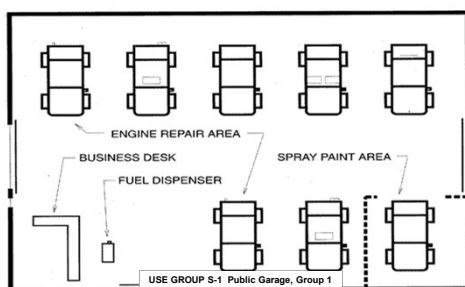


Figure 311.2  
USE GROUP S-1 — PUBLIC GARAGE, GROUP 1

---

---

---

---

---

---

---

## STORAGE

- “Use Group S—2”: All buildings and structures, or parts thereof, which are used primarily for the storage of noncombustible materials, and of low hazard wares that do not ordinarily burn rapidly such as products on wood pallets or in paper cartons without significant amounts of combustible wrappings; including, among others, warehouses, storehouses and freight depots. Such products may have a negligible amount of plastic trim such as knobs, handles or film wrapping.

---

---

---

---

---

---

---

## UTILITY

- **Building and structures of an accessory character and miscellaneous structures not classified in any specific use group shall be constructed, equipped and maintained to conform to the requirements of this code commensurate with fire and life hazard incidental to their occupancy. Shall include structures that are accessory to a residential occupancy**

|                        |                    |
|------------------------|--------------------|
| Agricultural buildings | Livestock shelters |
| Barns                  | Detached Garages   |
| Carports               | Greenhouses        |
| Grain Silos            | Shed( <2,500 sqft  |

---

---

---

---

---

---

---

## Use Group Example 1

Auto body Shop

Use Group \_\_\_\_\_

High School

Use Group \_\_\_\_\_

WAWA

Use Group \_\_\_\_\_

AMC Movie Theater

Use Group \_\_\_\_\_

|          |               |                         |
|----------|---------------|-------------------------|
| <b>A</b> | Assembly      | A-1, A-2, A-3, A-4, A-5 |
| <b>B</b> | Business      |                         |
| <b>E</b> | Educational   |                         |
| <b>F</b> | Factory       | F-1, F-2                |
| <b>H</b> | High Hazard   | H-1, H-2, H-3, H-4, H-5 |
| <b>I</b> | Institutional | I-1, I-2, I-3           |
| <b>M</b> | Mercantile    |                         |
| <b>S</b> | Storage       | S-1, S-2                |
| <b>R</b> | Residential   | R-1, R-2, R-3, R-4, R-5 |
| <b>U</b> | Utility       |                         |

---

---

---

---

---

---

---

### Summary

In this module will have discussed...

- How buildings are classified at under the UCC-NJ and UFC-NJ,
- How the different codes are applied,
- Defined life hazard uses
- Use Group classification.

---

---

---

---

---

---

---

### Review Questions

- See student manual
  - Module 2 - Module review questions

---

---

---

---

---

---

---

### Use Group/Life Hazard Use Homework

Refer to the pages in your student handout

Exercise #2

---

---

---

---

---

---

---

## Next Lesson

Module 3

Code Administration

Date/time

---

---

---

---

---

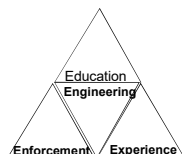
---

---

## Fire Inspector Certification Program

### New Jersey Uniform Fire Code Inspector Training Program

Module 1 Introduction to Fire Code Enforcement



71

---

---

---

---

---

---

---

## Summary

In this Module we have discussed:

- Course Parameters
- Grading policy
- Code History
- State NJ Legislature
- Uniform Construction Code
- Basic Fire Science
- Terms

---

---

---

---

---

---

---



## Home work assignment

- List on paper and bring to the next class
- 10 Buildings and or structures and or property in you or around your home, fire house, or work.
- **List the name**
- **Address**
- **What they do** (Auto repair body shop, retail sales, business office)
- (use the sheet provided in the student manual)

---

---

---

---

---

---

---

- END OF MODULE

---

---

---

---

---

---

---